



50 Heysen Street ABBOTSBURY NSW

4 3 2

Perfectly positioned with commanding rear views of Abbotsbury parklands this grand Abbotsbury residence on a large elevated 762 sq m block is as close to living on acreage as you'll get without the hefty price tag. Large living areas with a possible 5th bedroom downstairs it will suit almost all families. Additional features include:

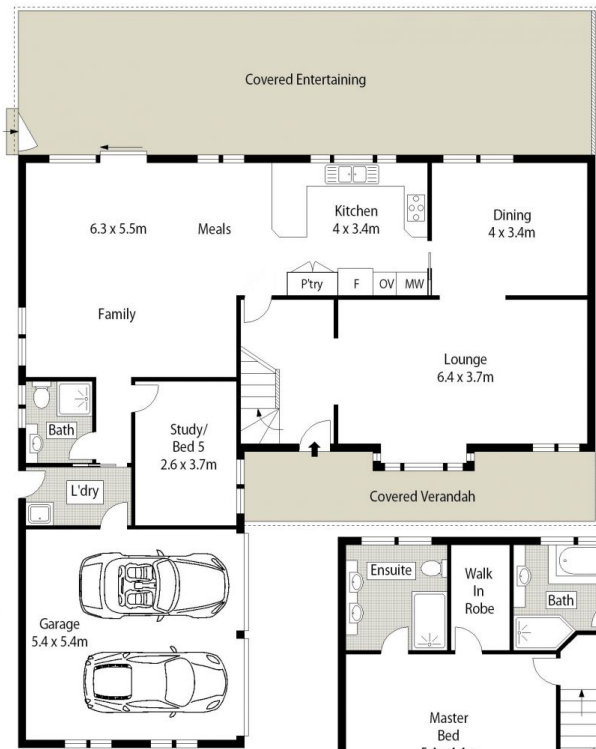
- 4 large bedrooms, walk-in robe to master and an ensuite
- Remaining bedrooms all have built ins, good sizes
- Timber floors throughout, plantation shutters, air con & more
- Large lounge and dining areas, huge family room great for large families
- Laminated kitchen, 900mm st/steel app's, pantry, tiled splash-back
- Large covered verandah ideal for year round entertaining

Type : House
Price : \$ 1,600,000
Land Size : 762 sqm
View : <https://www.oaap.com.au/sale/nsw/western-sydney/abbotsbury/residential/house/7583157>

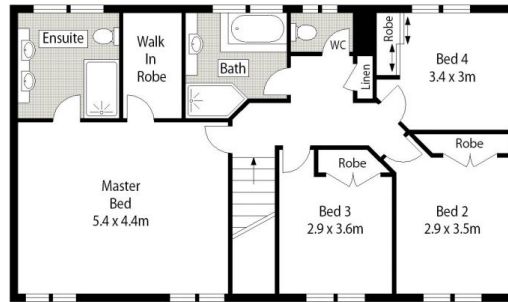


Nick Alexopoulos
02 8123 0145

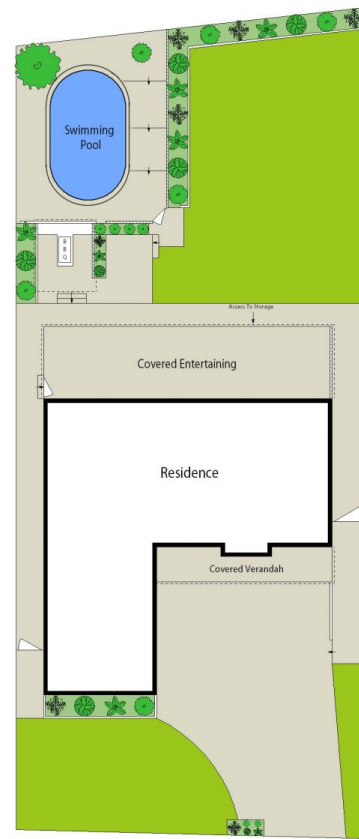
[For full version visit the website](https://www.oaap.com.au)



LOWER LEVEL



UPPER LEVEL



SITE PLAN (NOT TO SCALE)



0 1 2 3 4 5 SCALE (METRES)

Scale in metres. Indicative only. Dimensions are approximate. All information contained herein is gathered from sources we believe to be reliable. However we cannot guarantee its accuracy and interested persons should rely on their own enquiries.

50 Heysen Street, Abbotsbury

ONE AGENCY
ALEXOPOULOS PROPERTY