



4 Newmen Close WETHERILL PARK NSW

3 2 2

This privately built full brick split level home is representative of days gone by when homes were built to last. Occupying a generous 557sq m block in one of Wetherill Parks finest streets it is ready for that someone who is looking to put their special touch to something.

- 3 large bedrooms all king size, balcony off master bedroom with district views
- Large lounge room, family room & dining rooms, exposed brick feature walls, air con
- Timber kitchen, laminated bench-tops, 900mm elec appliances, incl dishwasher
- 2 fully tiled bathrooms in great condition
- Large double remote oversize garage.
- Front & rear verandahs to enjoy the sun morning & afternoon.

Type : House
Price : \$ 1,140,000
Land Size : 557 sqm
View : <https://www.oaap.com.au/sale/nsw/western-sydney/wetherill-park/residential/house/7583161>

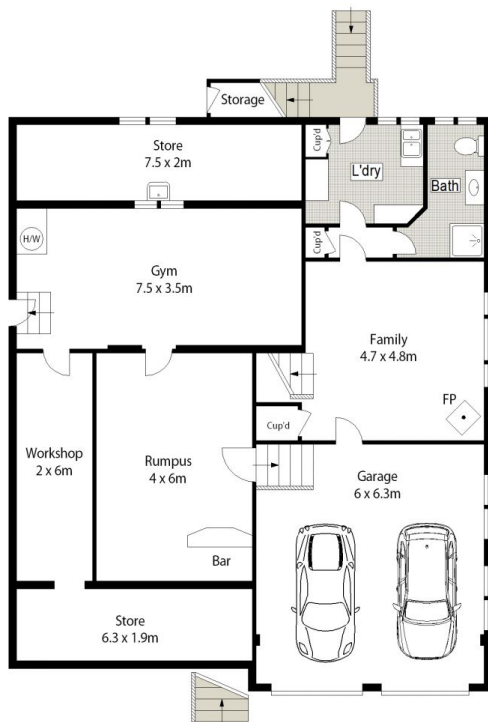


Nick Alexopoulos
 02 8123 0145

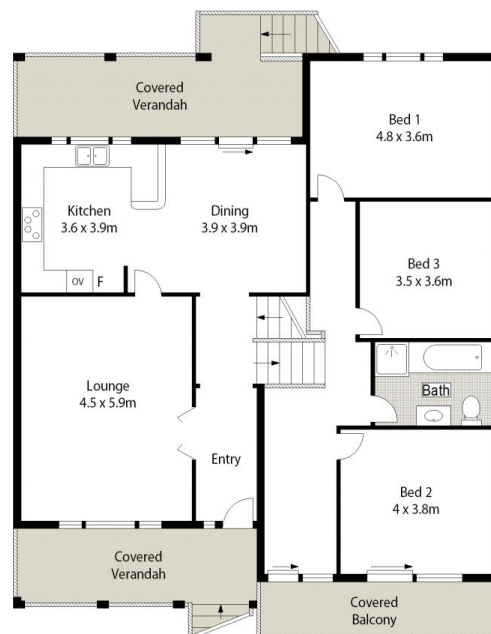
[For full version visit the website](https://www.oaap.com.au)



SITE PLAN (NOT TO SCALE)



LOWER LEVEL



UPPER LEVEL



Scale in metres. Indicative only. Dimensions are approximate. All information contained herein is gathered from sources we believe to be reliable. However we cannot guarantee its accuracy and interested persons should rely on their own enquiries.



4 Newmen Close, Wetherill Park

ONE AGENCY
ALEXOPOULOS PROPERTY