



10 Brearley Avenue MIDDLETON GRANGE NSW

3  2  1 

Beautifully maintained in as-new condition, this enticingly modern single level home is ready to move into for carefree family living. Delightfully appointed it features a thoughtful layout with fresh interiors complemented by an expansive yard and tiled all weather alfresco. First home buyers, down-sizers and investors should all take a look at this beauty.

- * Lovely corner block location, landscaped gardens, beautiful street
- * Tiled walkways, carpeted living areas, sunken lounge room
- * Open modern kitchen, gas appliances, pantry and breakfast bar area
- * Meals area/dining off kitchen, internal laundry. CCTV too.
- * Peaceful, bright large bedrooms with built-in robes

[For full version visit the website](https://www.oaap.com.au)

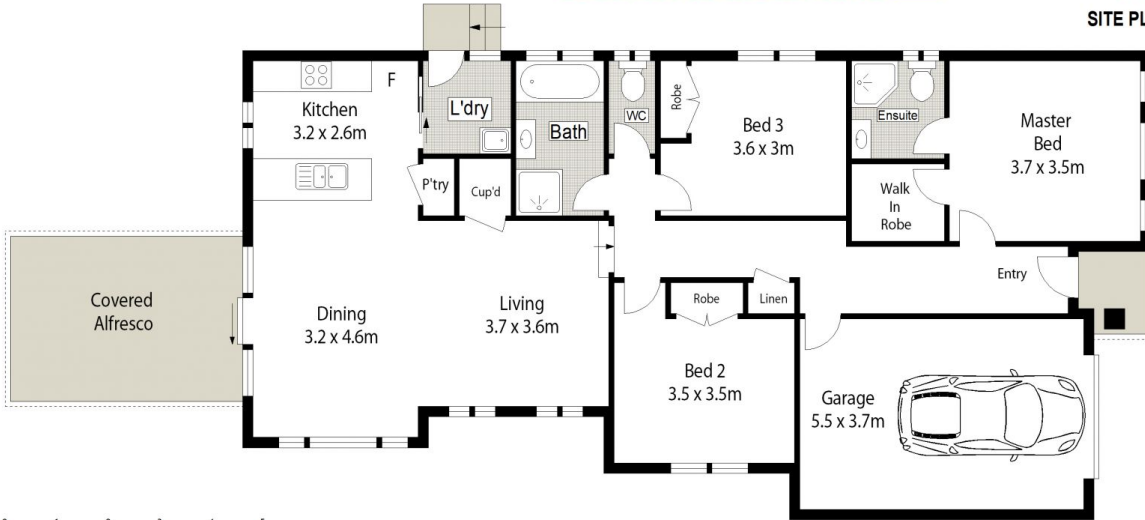
Type : House
Price : \$ 940,000
Land Size : 366 sqm
View : <https://www.oaap.com.au/sale/nsw/liverpool-fairfield/middleton-grange/residential/house/7583164>



Nick Alexopoulos
02 8123 0145



SITE PLAN (NOT TO SCALE)



Scale in metres. Indicative only. Dimensions are approximate. All information contained herein is gathered from sources we believe to be reliable. However we cannot guarantee its accuracy and interested persons should rely on their own enquiries.



10 Brearley Avenue, Middleton Grange

ONE AGENCY
ALEXOPOULOS PROPERTY