



45 Lillydale Avenue Gledswood Hills NSW

4 2 2

A comfortable & extremely versatile floor-plan was carefully planned when the original owners set out to build. Incorporating a built in salon with separate entrance allowing all hairdressers, beauticians & brow technicians the added bonus of working from home. Additional features are as follows:

- 4 bedrooms, built-ins to two of the bedrooms
- Master also features a walk in robe plus a fully tiled ensuite
- Large lounge & dining area is ideal for all family sizes
- Poly kitchen, Caesar-stone b/tops, 900mm gas c/top & 900mm appliances
- High ceilings, tiled living areas, floor boards to bedrooms
- Ducted air con, alarm, plantation shutters & intercom
- Huge covered outdoor entertaining area & alfresco, great for parties
- Large level back yard ideal for children, pets and even

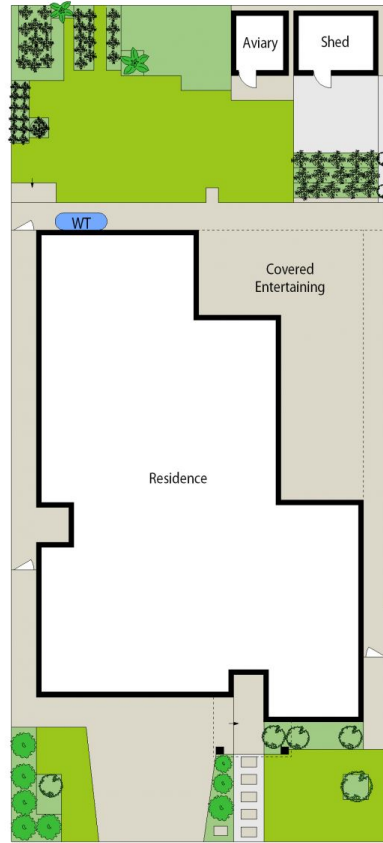
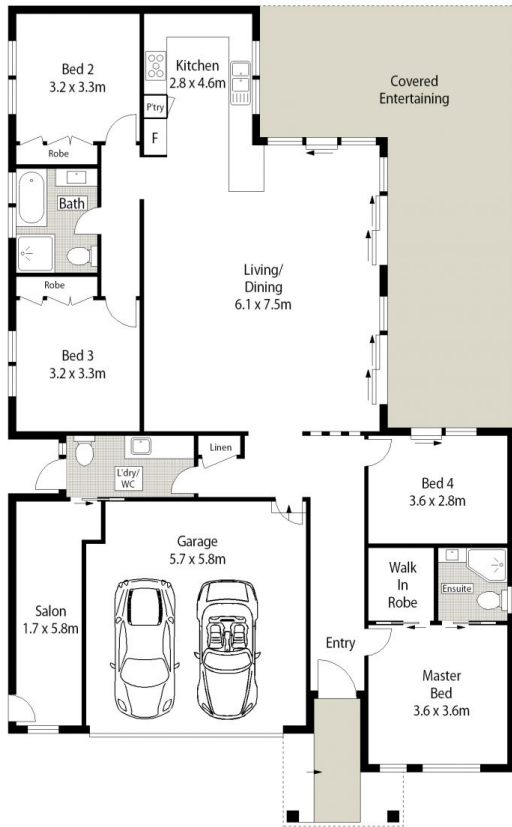
Price : \$ 1,060,000

Land Size : 503 sqm

View : <https://www.oaap.com.au/sale/nsw/macarthurcamden/gledswood-hills/residential/house/7583181>



Nick Alexopoulos
02 8123 0145



SITE PLAN (NOT TO SCALE)

0 1 2 3 4 5 SCALE (METRES)

Scale in metres. Indicative only. Dimensions are approximate. All information contained herein is gathered from sources we believe to be reliable. However we cannot guarantee its accuracy and interested persons should rely on their own enquiries.

45 Lillydale Avenue, Gledswood Hills

ONE AGENCY
ALEXOPOULOS PROPERTY