



2 Horn Close ABBOTSBURY NSW

4 2 1

Ideally located & perched high on the hill with district views is this impeccably kept & loved family home in a tightly held cul de sac. Boasting an amazing outdoor entertaining area it is perfect for a young & growing family especially heading into summer. Multiple living areas ensure comfortable year round living for all.

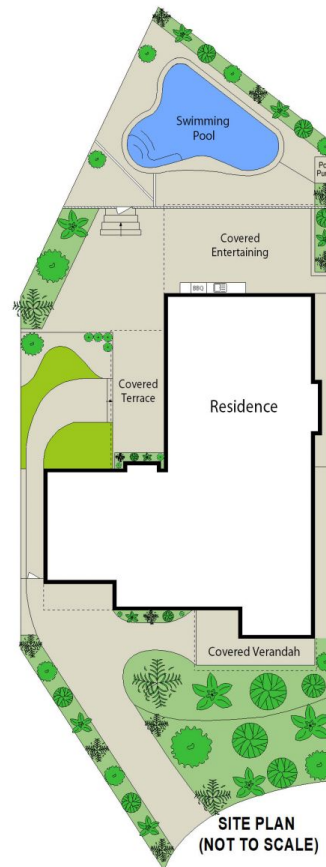
- 4 bedrooms, built ins to all, ensuite to master
- Sunken formal lounge with bar area & timber floors
- Large eat in renovated kitchen, poly finish with 40mm Ceasar-stone b/tops
- Glass splash-back, 900mm DeLonghi gas c/top, oven & r/hood, breakfast bar
- Separate formal dining & family rooms
- Huge covered alfresco area with pizza oven, bbq, r/hood, sink & ceiling fans

Type : House
Price : \$ 1,300,000
Land Size : 701 sqm
View : <https://www.oaap.com.au/sale/nsw/western-sydney/abbotsbury/residential/house/7583183>



Nick Alexopoulos
 02 8123 0145

[For full version visit the website](https://www.oaap.com.au)



0 1 2 3 4 5 SCALE (METRES)

Scale in metres. Indicative only. Dimensions are approximate. All information contained herein is gathered from sources we believe to be reliable. However we cannot guarantee its accuracy and interested persons should rely on their own enquiries.

2 Horn Close, Abbotsbury

ONEAGENCY
ALEXOPOULOS PROPERTY

