



## 17 Restwell Road BOSSLEY PARK NSW

5 3 4

Commanding stunning district views all the way to the city skyline this privately built residence showcases generous proportions & suits large families seeking a comfortable lifestyle. It's ideally set on 626sqm close to Marconi Club, Stocklands Mall & Western Sydney Parklands.

- 2.7m ceilings top & bottom, gas heating, air conditioning, freshly painted
- Large kitchen, granite benchtops, gas cooking & island bar,
- Huge family room & casual dining, tiled living areas
- Covered alfresco overlooks level yard for kids to play, possible granny flat STCA
- Oversized bedrooms with built in robes & ceiling fans
- Master bedroom is king size with built ins & a large ensuite
- Main bathroom is fully tiled, 3 way with separate toilet & vanity

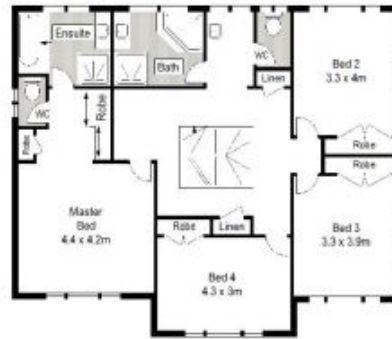
**Price** : \$ 1,080,000  
**Land Size** : 626 sqm  
**View** : <https://www.aaap.com.au/sale/nsw/western-sydney/bossley-park/residential/house/7583224>



**Nick Alexopoulos**  
 02 8123 0145



LOWER LEVEL



UPPER LEVEL



SITE PLAN (NOT TO PLAN)



17 Restwell Road, Bossley Park

Scale in metres. Indicative only. Dimensions are approximate. All information contained here in is gathered from sources we believe to be reliable. However we cannot guarantee its accuracy and interested persons should rely on their own enquiries.

**ONEAGENCY**  
ALEXIOPOULOS PROPERTY