



## 25 Wylde Crescent ABBOTSBURY NSW

5 3 4

Situated in the tightly-held pocket of Abbotsbury, this elegant family home effortlessly balances traditional grandeur with recent updates across a seamless indoor/outdoor design. Its wrapped in manicured gardens and wonderfully located close to private schools, supermarkets and transport options.

- Extensive floorplan offers a choice of lounge and dining zones
- All-weather entertainers terrace overlooks the heated salt-water pool
- Park-like grassed area with landscaped gardens, ideal for children
- Gourmet CaesarStone kitchen equipped with a self-cleaning oven
- Five large bedrooms, fifth can be utilised as a study/guest

[For full version visit the website](https://www.oaap.com.au)

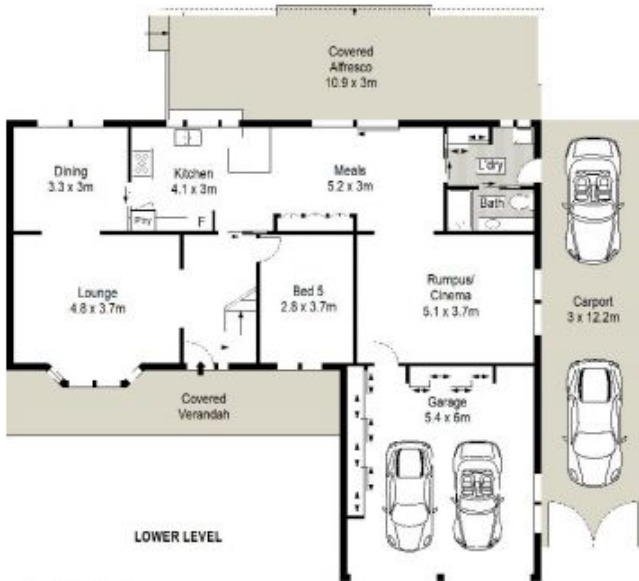
**Type** : House  
**Price** : \$ 1,035,000  
**Land Size** : 700 sqm  
**View** : <https://www.oaap.com.au/sale/nsw/western-sydney/abbotsbury/residential/house/7583248>



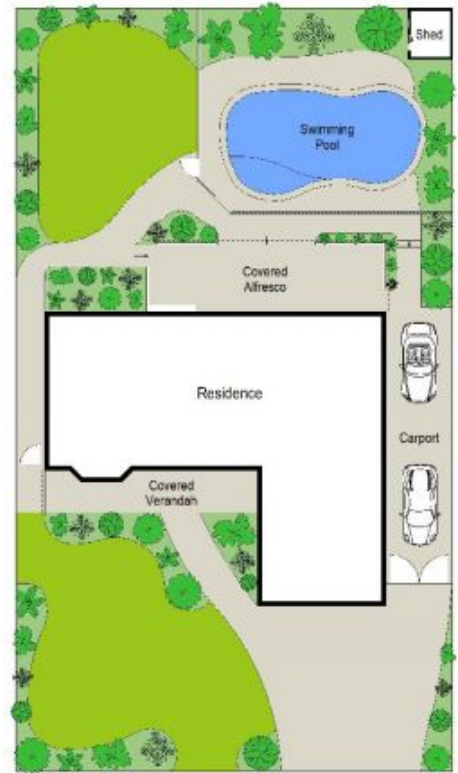
**Nick Alexopoulos**  
02 8123 0145



UPPER LEVEL



LOWER LEVEL



SITE PLAN (NOT TO SCALE)



0 1 2 3 4 5 6 7 8 9 10 METRES

Scale in metres. Indicative only. Dimensions are approximate. All information contained herein is gathered from sources we believe to be reliable. However we cannot guarantee its accuracy and interested persons should rely on their own enquiries.

25 Wylde Crescent, Abbotsbury

**ONEAGENCY**  
ALEXOPOULOS PROPERTY