

2 Thorpe Place ABBOTSBURY NSW

5 3 2

A tuscan inspired family offering in a premier locale. Featuring multiple living areas set out over two levels with 5 bedrooms & a home office this is a beautiful home looking for a growing family. Located close to the M7 for easy access to the city or south/north & close to selective & local schools, the bonuses are endless.

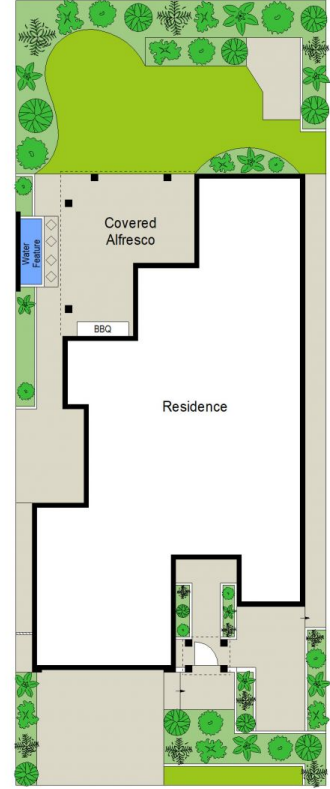
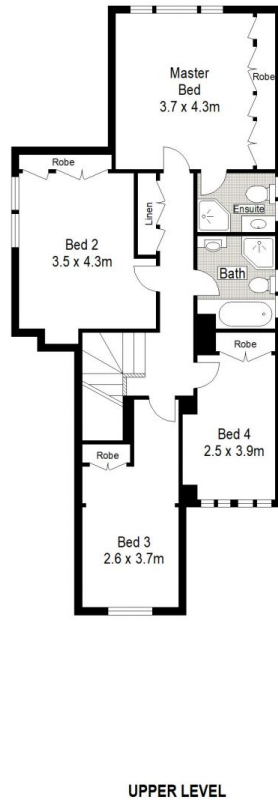
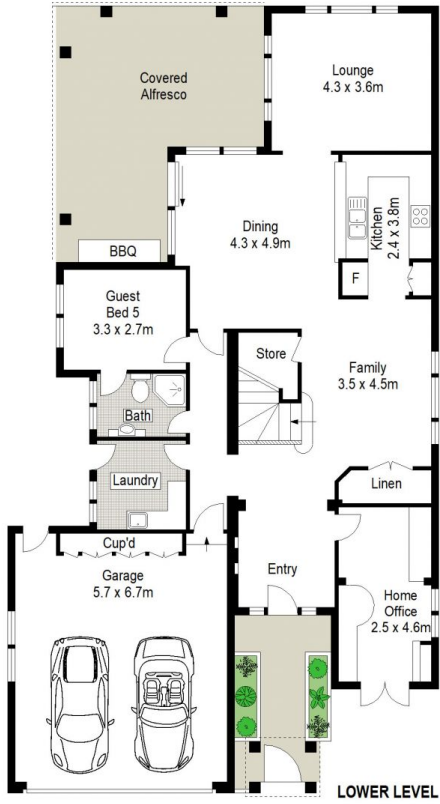
- Four good sized bedrooms upstairs with built-ins to all and ensuite to master.
- Additional 5th bedroom downstairs as well as additional home office/study.
- Family room, spacious dining and lounge room.
- Modern galley style polyurethane kitchen with Caesar Stone bench tops, glass splash back.
- Dishwasher, gas cooking, soft close cupboards and

Type : House
Price : \$ 770,000
Land Size : 451 sqm
View : <https://www.oaap.com.au/sale/nsw/western-sydney/abbotsbury/residential/house/7583254>



Nick Alexopoulos
02 8123 0145

[For full version visit the website](https://www.oaap.com.au)



Scale in metres. Indicative only. Dimensions are approximate. All information contained herein is gathered from sources we believe to be reliable. However we cannot guarantee its accuracy and interested persons should rely on their own enquiries.



2 Thorpe Place, Abbotsbury

ONE AGENCY
ALEXOPOULOS PROPERTY