



6 Nightshade Close DENHAM COURT NSW

5 3 2

A palatial haven of world class luxury and custom design, this grand residence is devoted to effortless family living with its quality inclusions, multiple living zones and impressive alfresco area. It is moments from Willowdale Shopping Centre, newly opened parks & train station.

- Soaring 19ft ceilings upon entry with bespoke chandeliers
- Additional master on ground level can be guest or elderly accomodation
- Oversize master upstairs, walk in robes, huge ensuite
- Designer fully tiled bathrooms, wall hung vanities, free standing bathtubs
- Amazing designer kitchen features 2.6m x 1.2m island bench wrapped in 60mm stone tops
- 900mm glass Omega cooktop & r/hood, Blanco sink, Methven tap ware & huge butlers pantry

Type : House
Price : \$ 1,220,000
Land Size : 455 sqm
View : <https://www.aaap.com.au/sale/nsw/macarthurcamden/denham-court/residential/house/7583270>



Nick Alexopoulos
 02 8123 0145

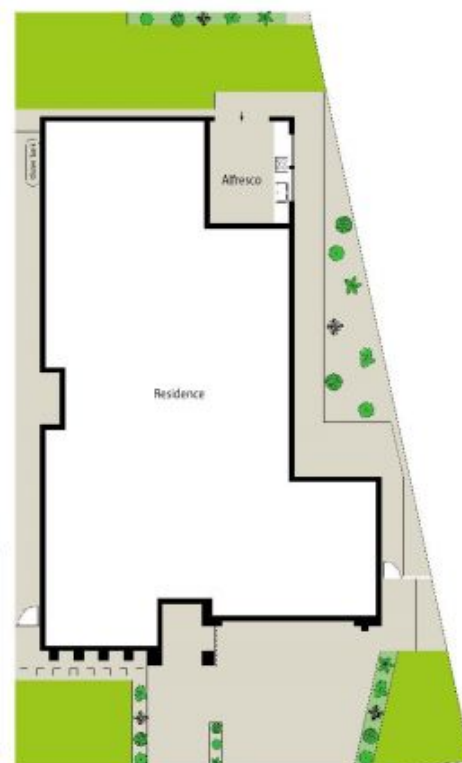
[For full version visit the website](https://www.aaap.com.au)



LOWER LEVEL



UPPER LEVEL



SITE PLAN (NOT TO SCALE)

Scale in metres. Indicative only. Dimensions are approximate. All information contained herein is gathered from sources we believe to be reliable. However we cannot guarantee its accuracy and interested persons should rely on their own enquiries.

6 Nightshade Close, Denham Court

ONEAGENCY
ALEXIOPOULOS PROPERTY