



69 Sawsedge Avenue DENHAM COURT NSW

4 2 1

This immaculately presented single storey stunner is perfectly positioned in the highly sought after Willowdale Estate & surrounded by parks, play areas and moments to the newly opened Willowdale Shopping Centre & Leppington train station. Just under 2 years old it offers multiple, living areas with a flexible floor-plan and the option to convert to a 5th bedroom. Living areas flow from the kitchen to the living out to the alfresco & a huge backyard which could easily accommodate a pool.

Additional features:

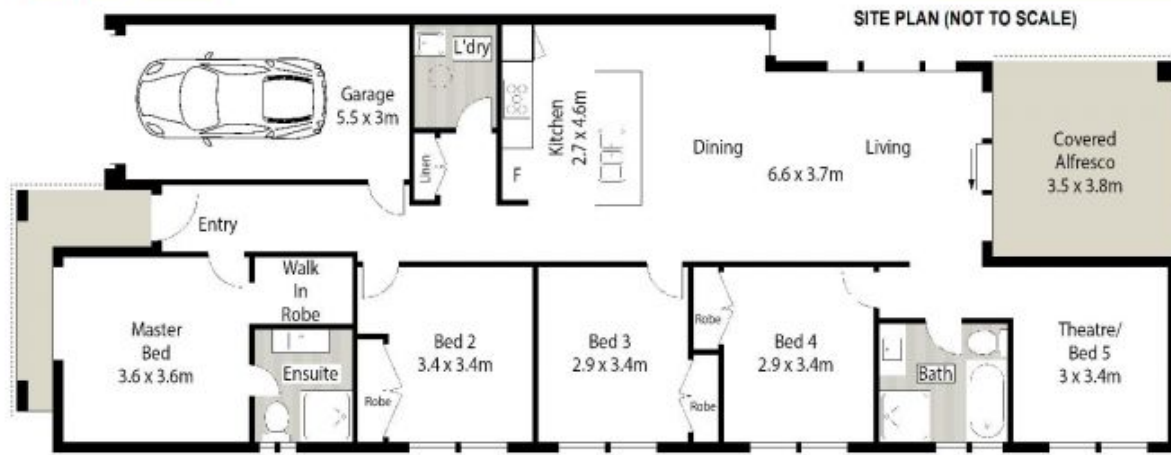
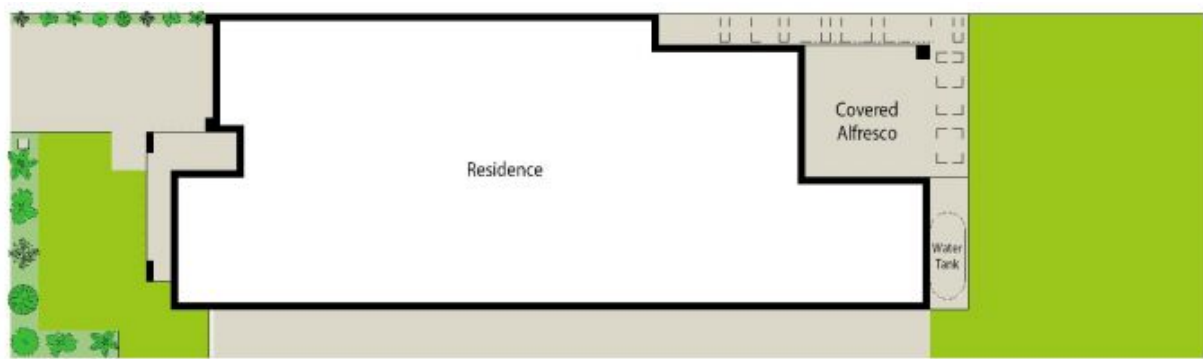
- Four large bedrooms, built-ins to all
- Master bedroom has a walk in robe & ensuite
- Fully tiled throughout, ducted air, led d/lights, dual blinds, alarm
- Gourmet kitchen with island bench/breakfast bar waterfall

Type : House
Price : \$ 725,000
Land Size : 341 sqm
View : <https://www.aaap.com.au/sale/nsw/macarthurcamden/denham-court/residential/house/7583274>



Nick Alexopoulos
 02 8123 0145

[For full version visit the website](https://www.aaap.com.au)



0 1 2 3 4 5
SCALE (METRE)

Scale in metres. Indicative only. Dimensions are approximate. All information contained herein is gathered from sources we believe to be reliable. However we cannot guarantee its accuracy and interested persons should rely on their own enquiries.



69 Sawsedge Avenue, Denham Court

ONEAGENCY
ALEXIOPOULOS PROPERTY