



## 17 Serpentine Street BOSSLEY PARK NSW

5 🏠 2 🚗 1 🚗

An exciting opportunity awaits the buyer of this home. Experience old school charm and plenty of space. It's been held by the same family for almost 29 years. A flexible floor-plan offers upstairs & downstairs living with the possibility for a 6th bedroom. Move in & enjoy or renovate and put your touch own touch on it

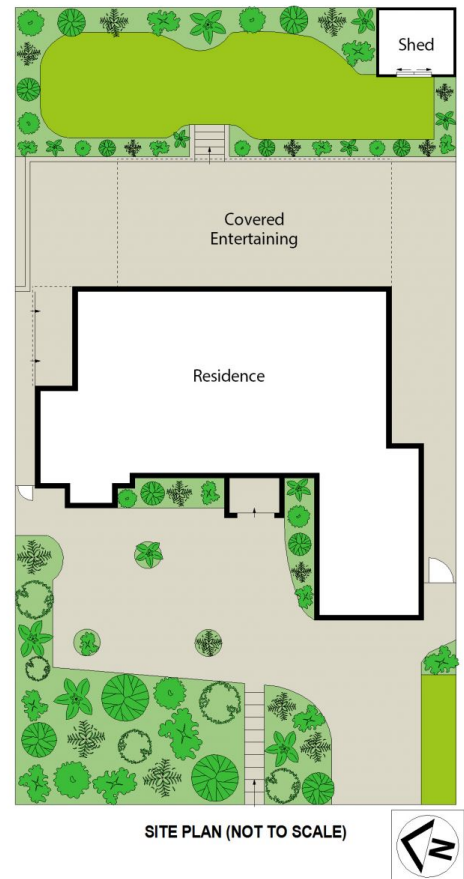
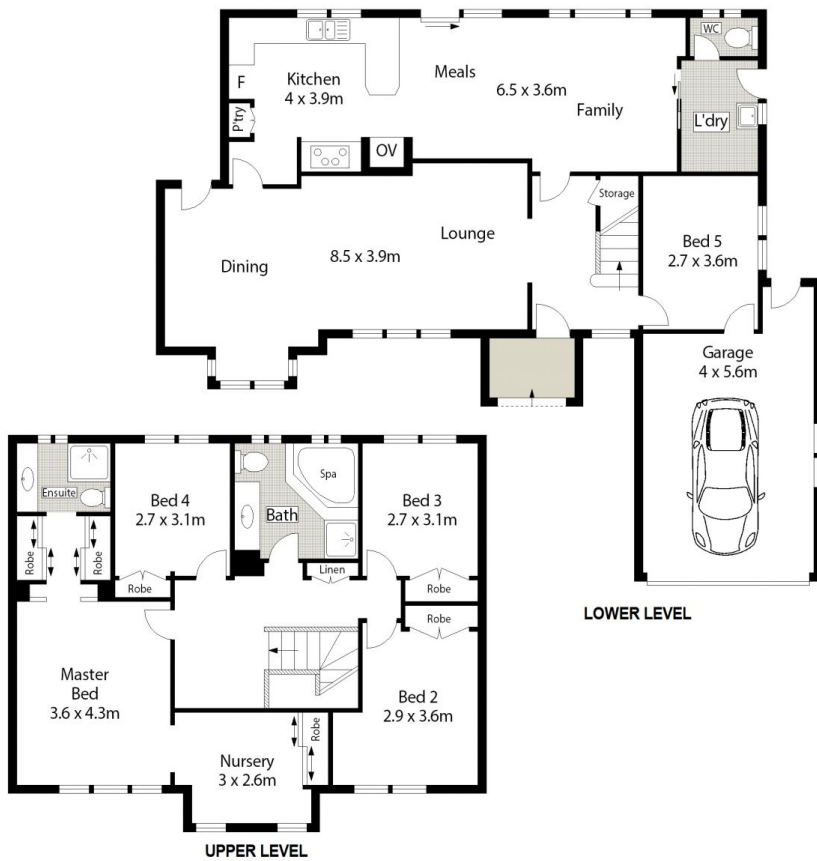
- 4 bedrooms upstairs, 1 bedroom downstairs
- Upstairs bedrooms all have built ins, carpeted
- Master features a nursery, walk thru robes & ensuite
- Timber laminated kitchen gas cooking
- Huge tiled formal lounge & dining areas
- Remote garage, large level lawn for kids & pets
- Huge covered entertaining area,
- Close to local schools, shops & churches
- Elevated position on high side of the street

This is all situated on a 598sq m block with mature gardens in a great & quiet street. Call Nick on 0411 320 230 for an

**Price** : \$ 935,000  
**Land Size** : 598 sqm  
**View** : <https://www.oaap.com.au/sale/nsw/western-sydney/bossley-park/residential/house/7583301>



**Nick Alexopoulos**  
**02 8123 0145**



0 1 2 3 4 5 SCALE (METRES)

Scale in metres. Indicative only. Dimensions are approximate. All information contained herein is gathered from sources we believe to be reliable. However we cannot guarantee its accuracy and interested persons should rely on their own enquiries.

17 Serpentine Street, Bossley Park

**ONE AGENCY**  
ALEXOPOULOS PROPERTY