

14 Kylie Way CASULA NSW

6 3 3

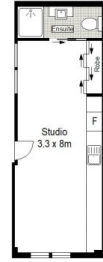
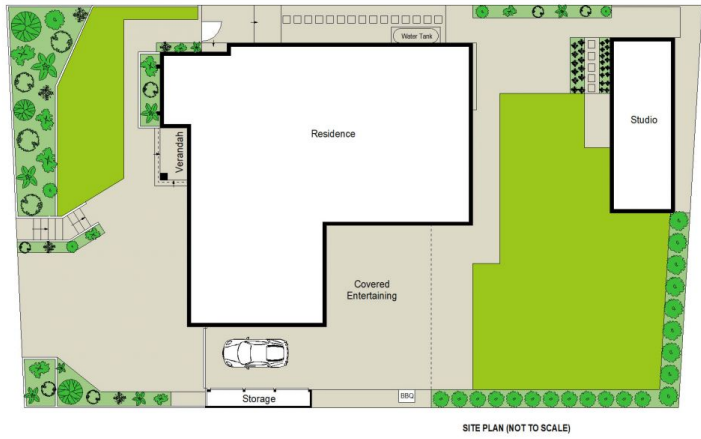
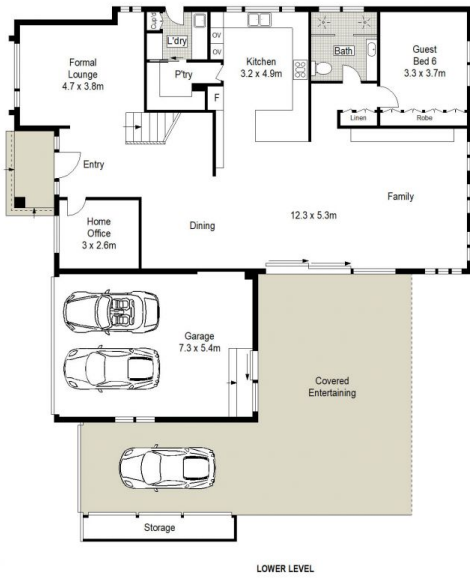
A palatial haven of world class luxury and custom design, this grand residence is devoted to effortless family living with its quality inclusions, multiple living zones and impressive alfresco area. No expense has been spared to create the ultimate family haven. Designed for big families and tucked away in an extremely private location, it doesn't get much better than this. Some of the many features include

- Six (6) large bedrooms. Walk-in robe & ensuite to main bedroom
- 2.7m ceilings with shadow-line finish & polished concrete floors to ground level.
- Mix of sunlit formal and casual spaces over two expansive levels
- Stunning entertainers kitchen, poly cabinetry & Calacatta marble bench tops & s/back
- 900mm Smeg gas c/top, dual ovens, m/wave, steamer,

Price : \$ 2,060,000
Land Size : 824.8 sqm
View : <https://www.oaap.com.au/sale/nsw/liverpool-fairfield/casula/residential/house/7583313>



Nick Alexopoulos
 02 8123 0145



Scale in metres. Indicative only. Dimensions are approximate. All information contained herein is gathered from sources we believe to be reliable. However we cannot guarantee its accuracy and interested persons should rely on their own enquiries.

14 Kylie Way, Casula

ONEAGENCY
ALEXOPOULOS PROPERTY