



1/30 Barton Street Smithfield NSW

4 2 1

An exciting opportunity for all astute buyers. The instant appeal and attractive facade is only the start of this well kept townhouse with a recent freshen up. This massive townhouse is like no other being situated in a quiet street of Smithfield, conveniently located from local shops and schools plus a few minutes short drive to Neeta City. An opportunity like this only comes up on the rarest of occasions.

Additional features we like:

- Master bedroom is downstairs with built ins, ensuite, carpeted, suits elderly/disabled
- Three (3) x Bedrooms upstairs, with built ins and main bathroom.
- Polyurethane kitchen, caesar stone bench tops, gas

Type : Townhouse

Price : \$ 840,000

View : <https://www.aaap.com.au/sale/nsw/liverpool-fairfield/smithfield/residential/townhouse/8046158>

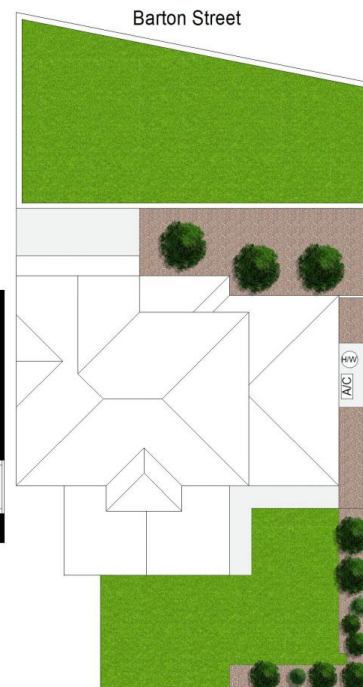
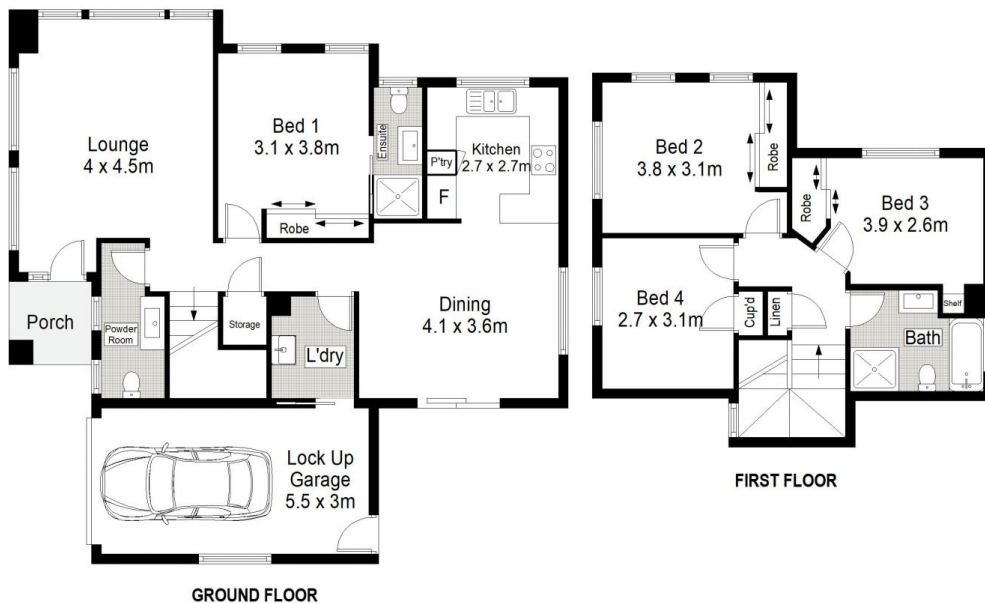


Nick Alexopoulos
02 8123 0145



Jaytee Spiteri
02 8123 0145

[For full version visit the website](https://www.aaap.com.au)



Scale in metres. Indicative only. Dimensions are approximate. All information contained herein is gathered from sources we believe to be reliable. However we cannot guarantee its accuracy and interested persons should rely on their own enquiries.

1/30 Barton Street, Smithfield

ONEAGENCY
ALEXOPOULOS PROPERTY